

KINGFORM SHUTTERING SYSTEM

Easy handling, totally modular.

The KINGFORM shuttering system is the ideal, cost-effective solution for the stationary production of a wide range of walls, floors and other precast elements. Due to the modular design, an extremely large number of possible combinations are possible at low investment costs. Windows, doors and built-in parts are easy to position. Short set-up times and a particularly ergonomic working are guaranteed by the low dead weight of the individual components. You are completely flexible, no matter whether you want to work with steel or wooden covering.

AREAS OF APPLICATION

Solid, sandwich or façade elements as well as precast columns and beams can be produced universally and cost-effectively with the KINGFORM shuttering system. For this purpose, the individual components of the modular system are flexibly combined on stationary tilting

and casting tables, circulating pallets and long-line beds. A wide variety of external and internal contours as well as different wall dimensions and thicknesses can be realized in this way with the shortest possible set-up times.

FEATURES

- Production length of the precast element to be formed flexibly
- Flexible use of corner connectors
- Easy fastening and releasing of the magnetic boxes on the base shutter
- Wood and steel covering to be exchanged with little effort
- Set-up time less than 10 minutes due to low weight of the components

ADVANTAGES

From a simple combination of magnetic boxes, base shutters, attachments and corner connectors, precast concrete elements can be produced stationary and without a high degree of automation. All assembly processes are carried out manually and without a hall crane. Due to the high stability and form stability, bending due

to improper handling is avoided. Holes on the rear side allow the assembly of additional installation parts. By means of the magnet technology the shutters can be easily moved and fixed at the desired element position. Since no screws are used between the magnet and the shutter, fast and precise work is possible.





KINGFORM SHUTTERING SYSTEM

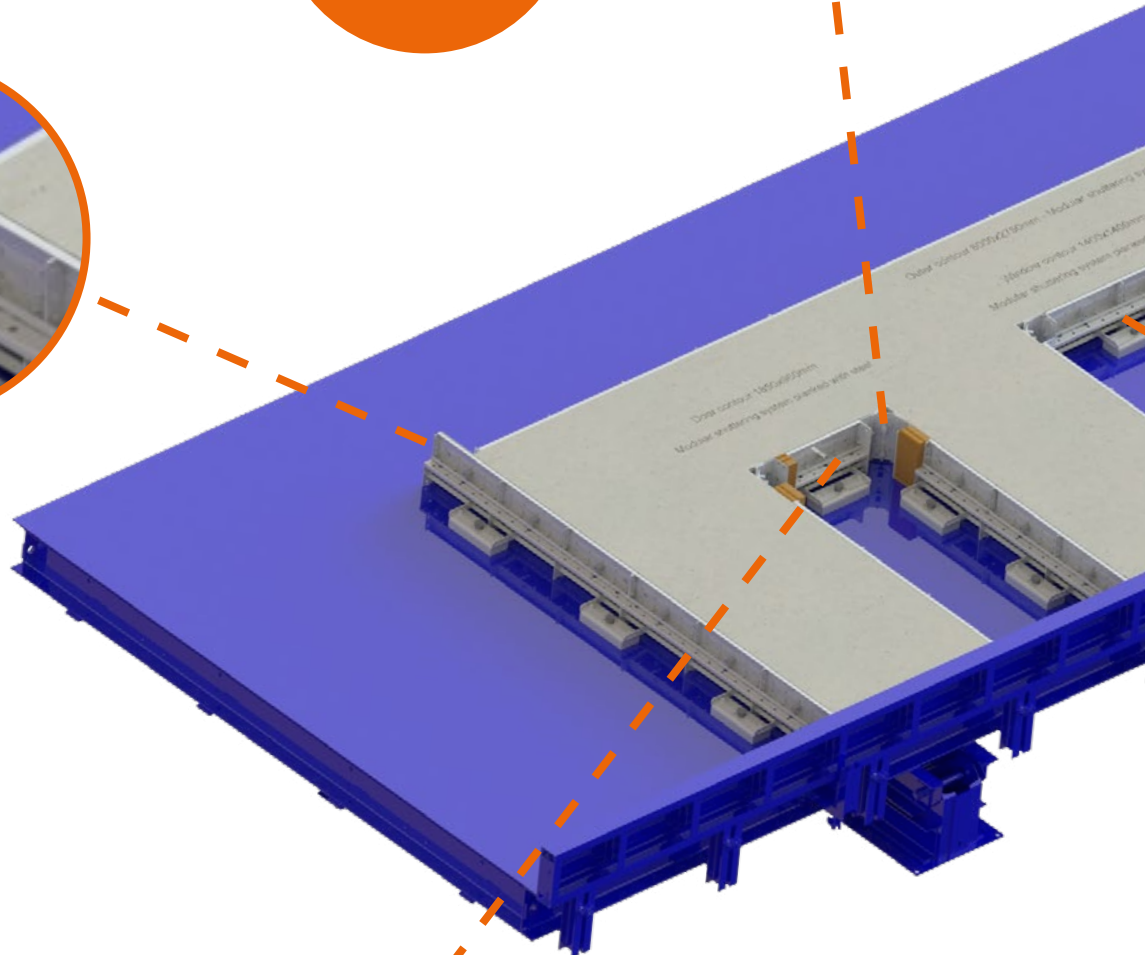
Components and configuration



Steel corner connectors with completion block for special lengths

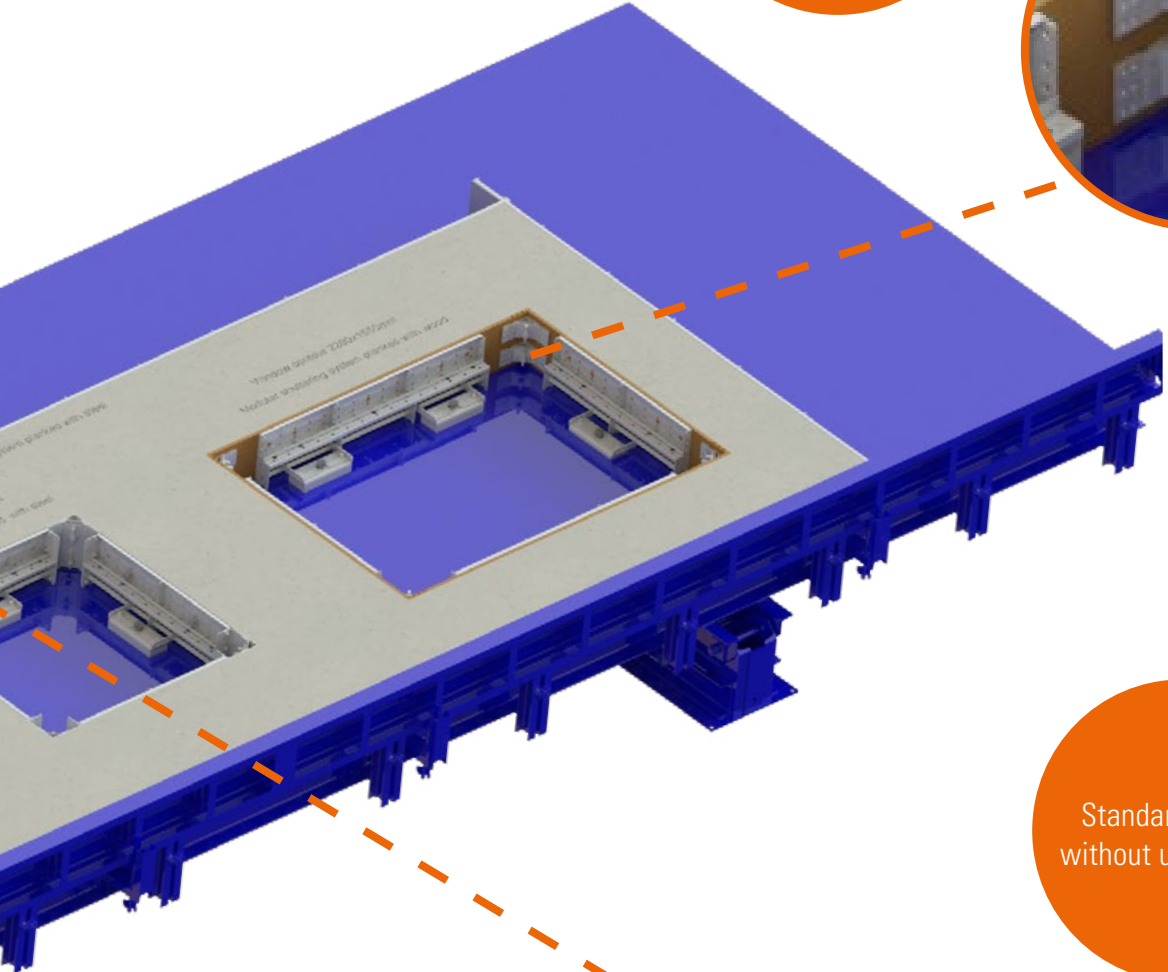


Outer corners are feasible without corner connectors

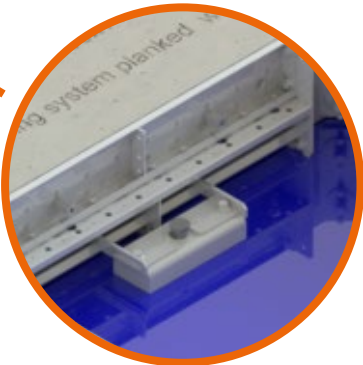


Shutters of 500 mm for door openings

Special length possible by wooden covering and realized by shifting the shuttering wood



Standard lengths without use of wood





ADVANTAGES

for easy use and implementation on site

MODULARITY

Due to high modularity extremely large number of possible combinations at low investment costs

Lightweight components for particularly ergonomic working

ERGONOMICS

FLEXIBILITY

Covering optionally with wood or steel without any special or additional parts

Break-free demoulding, especially relevant for recesses

QUALITY

DETAILED FEATURES

- Longitudinal or transverse shutters for all precast concrete elements with heights from 100 - 300 mm
- Concreteable on both sides, extendable in height, covering with steel or wood, manual handling
- High modularity, all components quickly and easily fixed
- Standard lengths expandable in steps of 500 mm, heights extremely flexible due to assembly

STANDARD LENGTHS INNER AND OUTSIDE CONTOURS

- Any product outer length can be realized in steps of 500 mm by an optimal combination of base shutters and attachments
- To produce internal contours with a corner connector (e.g. door recess), each length can be mapped in steps of 500 mm plus 200 mm (steel covering) or plus at least 175 mm (wood covering)
- To produce inner contours with two corner connectors (e.g. door recess), each length can be mapped in steps of 500 mm plus 400 mm (steel covering) or plus at least 350 mm (wood covering)

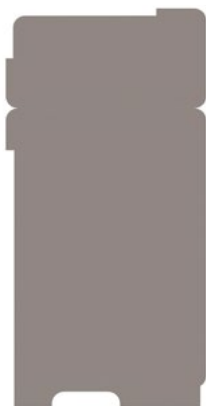
REALIZABLE COMBINATIONS FOR DIFFERENT PRODUCT HEIGHTS



Height = 100 mm
Base shutter lying



Height = 150 mm
Base shutter standing



Height = 200 mm
Base shutter standing +
Attachment 50 x 100 mm
lying



Height = 200 mm
Base shutter standing +
Attachment 50 x 150 mm
lying



Height = 250 mm
Base shutter standing +
Attachment 50 x 100 mm
standing



Height = 300 mm
Base shutter standing +
Attachment 50 x 150 mm
standing

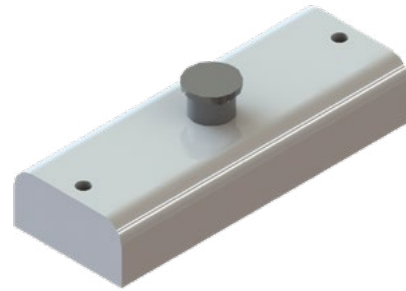


TECHNICAL DATA

Individually combined

Magnet box

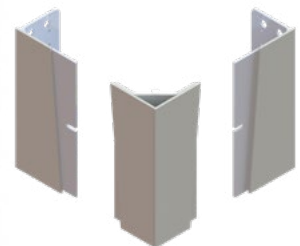
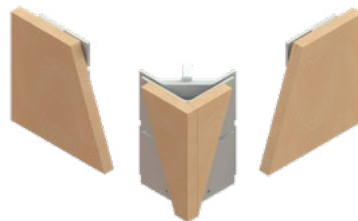
Type	Dimensions L x W x H mm	Weight kg	Holding force kg
KF-SM-1	320 x 120 x 60	7	2,100
KF-SM-2	320 x 120 x 60	6.8	1,800
KF-SM-3	240 x 120 x 60	5.7	1,350
KF-SM-4	280 x 60 x 40	2.5	900



Corner connectors

Type	Covering	Dimensions L x W x H mm	Weight kg
KF-CCW-1	wood	175 x 175 x 95	3.7
KF-CCS-1	steel	200 x 200 x 100	5.2
KF-CCS-2	steel	200 x 200 x 150	7.1
KF-CCS-3	steel	200 x 200 x 200	9.4
KF-CCS-4	steel	200 x 200 x 250	12.5
KF-CCS-5	steel	200 x 200 x 300	14.9

Corner connectors are only used for the inner contours (e.g. doors, windows). For standard heights of 100 mm and 150 mm, a single corner connector is positioned in the center. For larger heights, two corner connectors with uniform gaps per corner are used.



Base shutters

Type	Dimensions L x W x H mm	Weight kg
KF-BS-1	500 x 100 x 150	4.5
KF-BS-2	1,000 x 100 x 150	8.3
KF-BS-3	1,500 x 100 x 150	12.2

Suitable for wood and steel.



Attachments with 100 mm

Type	Dimensions L x W x H mm	Weight kg
KF-AT-1	500 x 50 x 100	2.3
KF-AT-2	1,000 x 50 x 100	4.5
KF-AT-3	1,500 x 50 x 100	6.7



Attachments with 150 mm

Type	Dimensions L x W x H mm	Weight kg
KF-AT-4	500 x 50 x 150	3.0
KF-AT-5	1,000 x 50 x 150	5.9
KF-AT-6	1,500 x 50 x 150	8.8



Steel covering

Type	Dimensions L x W x H mm	Weight kg*
KF-SC-1	500 x 5 x 100	2.7
KF-SC-2	500 x 5 x 150	3.7
KF-SC-3	500 x 5 x 200	5.4
KF-SC-4	500 x 5 x 250	6.4
KF-SC-5	500 x 5 x 300	7.3
KF-SC-6	1,000 x 5 x 100	4.7
KF-SC-7	1,000 x 5 x 150	6.6
KF-SC-8	1,000 x 5 x 200	9.3
KF-SC-9	1,000 x 5 x 250	11.3
KF-SC-10	1,000 x 5 x 300	13.2
KF-SC-11	1,500 x 5 x 100	7.0
KF-SC-12	1,500 x 5 x 150	10.0
KF-SC-13	1,500 x 5 x 200	13.9
KF-SC-14	1,500 x 5 x 250	16.9
KF-SC-15	1,500 x 5 x 300	19.8

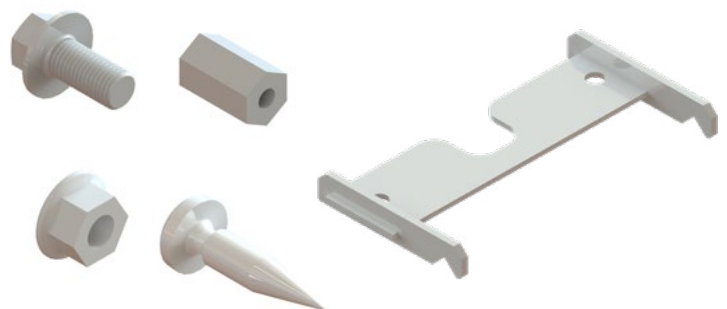


A wood thickness of 20 mm is recommended for the shuttering boards. Different wood thicknesses can also be used, but this would lead to dimensional changes in the case of inner contours, which must be taken into account.

*As a set with connectors.
Special dimensions on request.

Accessories

Type	Description
KF-AC-1	Screw DIN 6921 M12x25 mm 8.8
KF-AC-2	Nut DIN 6923 M12 8.8
KF-AC-3	Hexagon nut for steel covering
KF-AC-4	Assy pan head 4,5 x 20 St 2 K for wood+
KF-AC-5	Opening tool for magnets
KF-AC-6	Clamping device for KF-SM-1 and KF-SM-2
KF-AC-7	Clamping device for KF-SM-3
KF-AC-8	Clamping device for KF-SM-4



REPRESENTATIVE FOR KINGFORM

Vollert India Private Limited

Sikandrabad | India

info@vollert.in

www.vollert.in

Maninder Singh

Executive Sales Director

Phone: +91 95 6045 0535

Vaibhav Khante

Senior Sales Manager

Phone: +91 98 7119 3447

